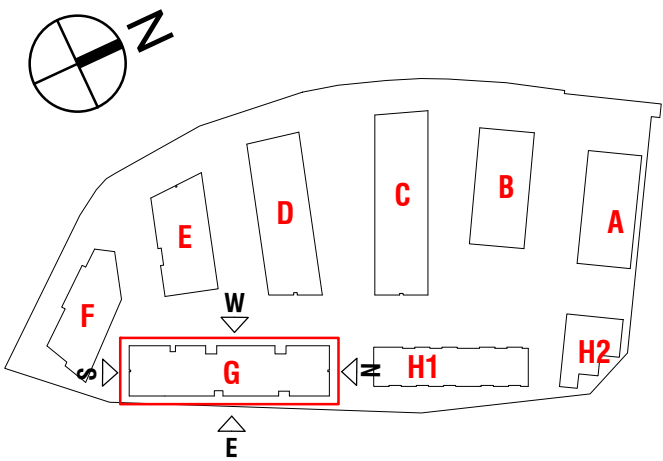


Orientation

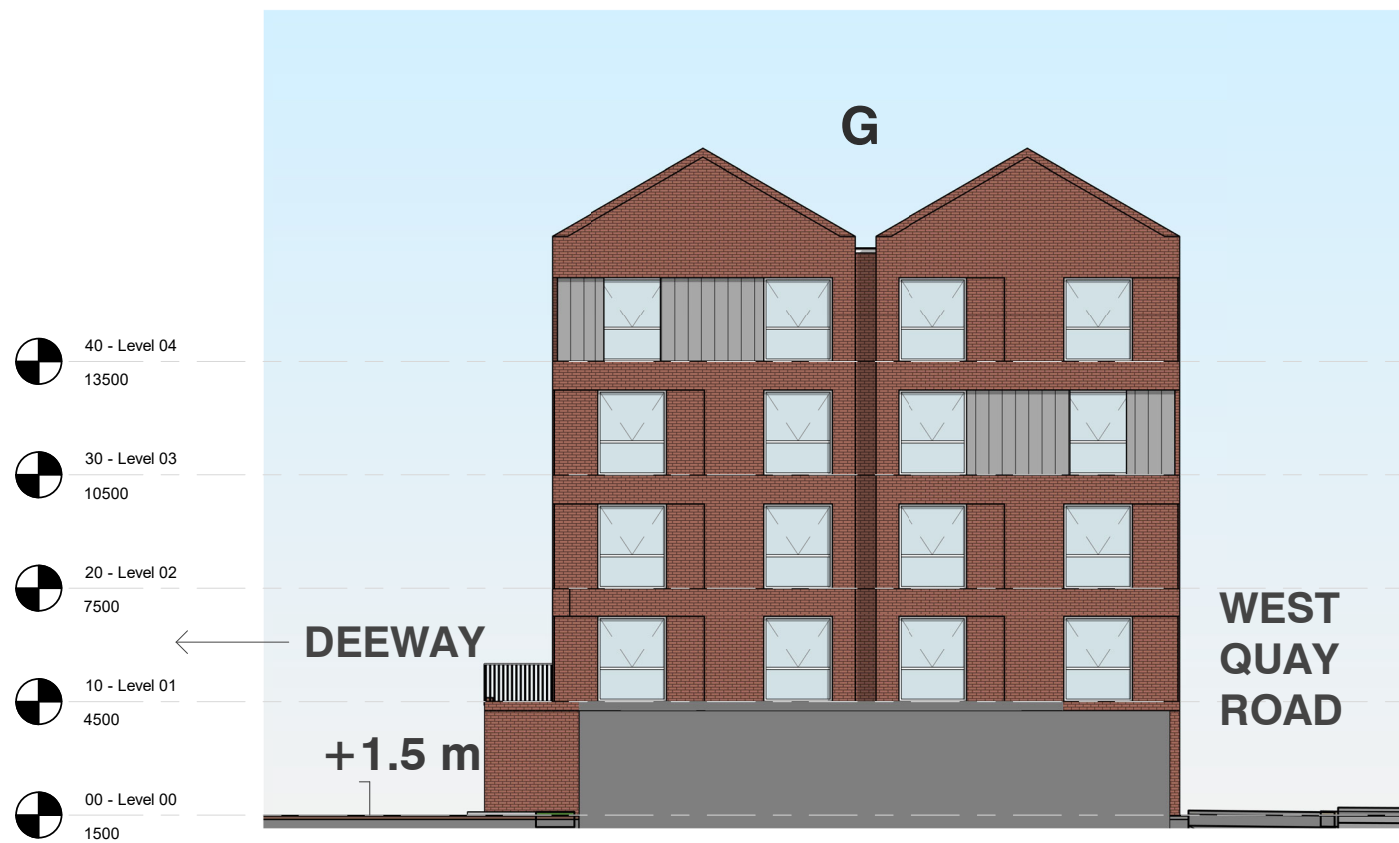
Key Plan



Block G North Elevation
1 : 200



Block G East Elevation
1 : 200



Block G South Elevation
1 : 200



Block G West Elevation
1 : 200

P02 04.02.22	Amendments to planning drawings issued on 26.03.21	SM	AR
P01 05.04.19	Updated information for planning issued on 28.05.18	SM	AR
Rev. Date	Revision	By	Checked
leonard design architects			
4th floor, Albion House			
5-13 Canal Street			
Nottingham, NG1 7EG, United Kingdom			
t. +44 (0) 115 945 0080			
e. office@leonarddesignarchitects.com			

Client
Reuben & Morgan Ltd.

Project
West Quay Road, Poole

Drawing Title
Block G Elevations

Project Number 0625	Suitability S4
Drawn by LW	Checked by SM
Scale @A1 As indicated	Date 05.04.19
File Identifier 0625 - LDA - ZZ - ZZ - DR - A - 08076	Revision P02

Purpose of Issue
PLANNING

Project Status
PLANNING

